

# CYCLE OF PERSONAL OWNERSHIP

DECEMBER 2020 WINNERS



CHELAN COUNTY

# CHRIS NYSTROM, JAKE SIMMONS, RANDY SYRIA & NATALIE BAERLOCHER

Below is RI fishway compliance metrics YTD please note that we do not exclude lamprey or overhaul times which lower our numbers. Hope to have that resolved for next year. Additional variables that may have influenced our metrics:

- L03 and L04 automated and remote control enabled this year
- L05 and L06 repaired April 27<sup>th</sup>
- M03 repaired May 27<sup>th</sup>
- Adjusted Right ladder control June 23<sup>rd</sup>
- LO2 drive shaft broke Nov 2<sup>nd</sup>
- Discovered incorrect weir height (water vs structural datum) right ladder diffusion chamber and tightened the dead band Nov 17<sup>th</sup> (corrected)
- Discovered incorrect weir height (water vs structural datum) left ladder diffusion chamber Nov 18<sup>th</sup> will enable once LO2 is repaired (conduct repairs during OVHL)
- On occasion there were instances where each ladder was unable to achieve compliance due to river conditions being out of range of the ladders operating capability. Independent operations (impact to compliance uncertain)
- Lower than average water year (impact to compliance uncertain)

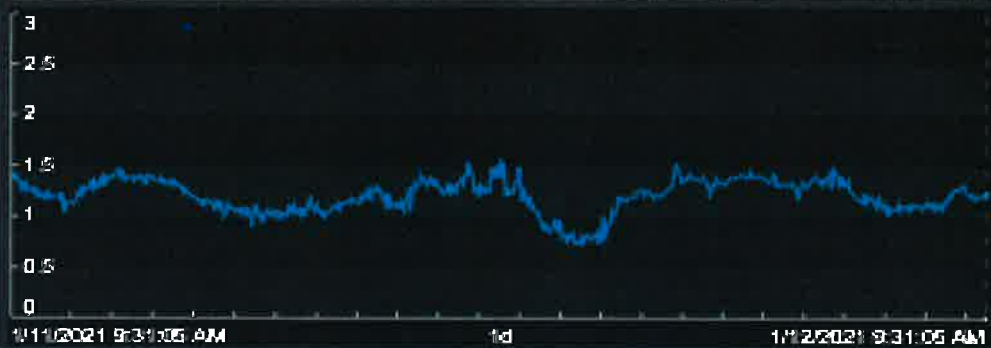
My assessment: We have gained a better understanding of where we are as far as compliance with the new tools developed for tracking and trending metrics (Thanks to Natalie and the BI team). This has resulted in several finds allowing us to make corrections further improving our ability to achieve HCP standards. The fishway attendants (Chris, Jake and Randy) have been paramount in enhancing compliance by having a questioning mindset always looking for ways to improve. They have been very responsive to issues and informing others so corrective actions can be addressed in a timely matter. I am overall very pleased with what we have been able to accomplish this year and looking forward to what we can accomplish next year. Compared to 2019 fishway compliance we have improved this year per ladder by a significant amount and the year is not over yet!

Our goal for this year was to target 90%. Left ladder overall compliance average increased 3%. Middle ladder overall compliance average increased 29.3%. Right ladder overall compliance average increased 6.8%.

LFL Entrance Differential Between 1 - 1.5 ft

1.2 Feet

Description	Value	Average	Minimum	Maximum	Range
LFL Fishway Water Level	573.89	573.77	572.80	575.02	2.42
LFL TW Level at Fishway Entrance	573.28	573.26	571.72	574.85	3.14
LFL Fishway-TW Differential	1.20	1.21	0.72	1.87	0.85



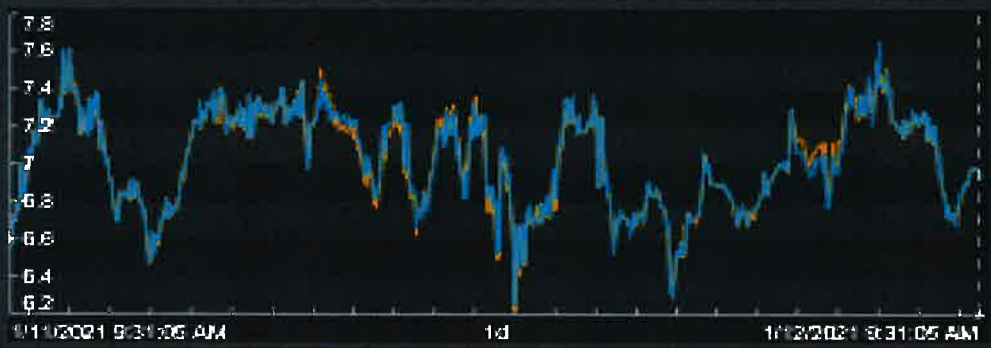
Depth over entrance L05 > 6.5 ft

7.0 Feet

Depth over entrance L06 > 6.5 ft

7.0 Feet

Description	Average	Minimum	Maximum	Range
LFL TW-Gate L05 Differential	7.02	6.24	7.88	1.42
LFL TW-Gate L06 Differential	7.02	6.21	7.64	1.43



LFL Depth Over Weir (607.84 - 608.04)

607.83 Feet

Description	Average	Minimum	Maximum	Range
LFL Diffusion Chamber Water Level	607.82	607.75	607.93	0.18

