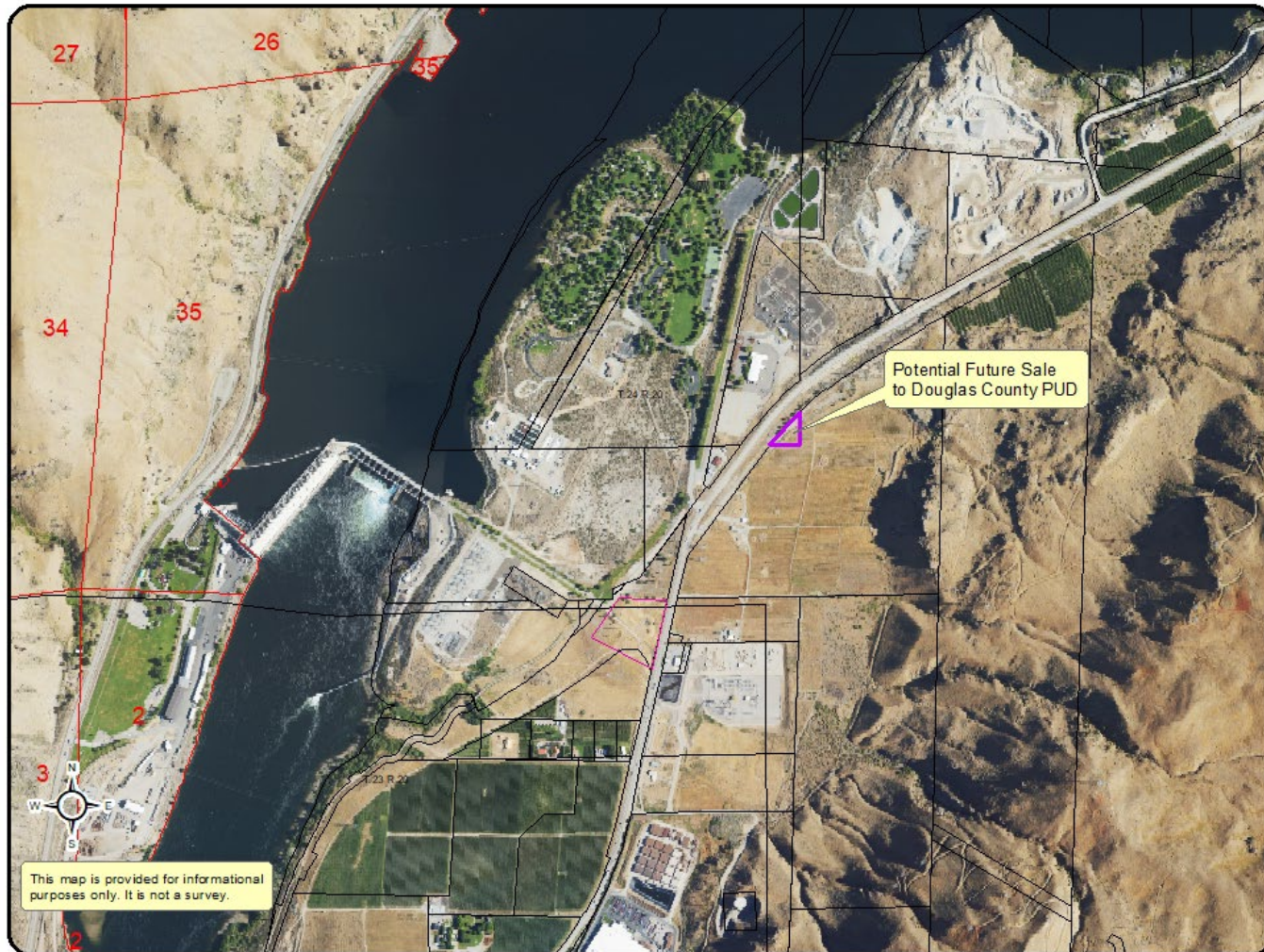
An aerial photograph of a dam and surrounding landscape. The dam is on the left, with a reservoir. The surrounding area includes fields, roads, and some buildings. A pink triangle is marked on the right side of the image, pointing to a specific area of land.

Resolution for Proposed Sale of Real Property to Douglas County PUD

January 20, 2025

Lisa Graves, Vicki Griffin

This potential sale was brought to the Board's attention at the April 1st and 15th 2024 board meetings in presentations for a nearby transaction with Douglas County PUD.

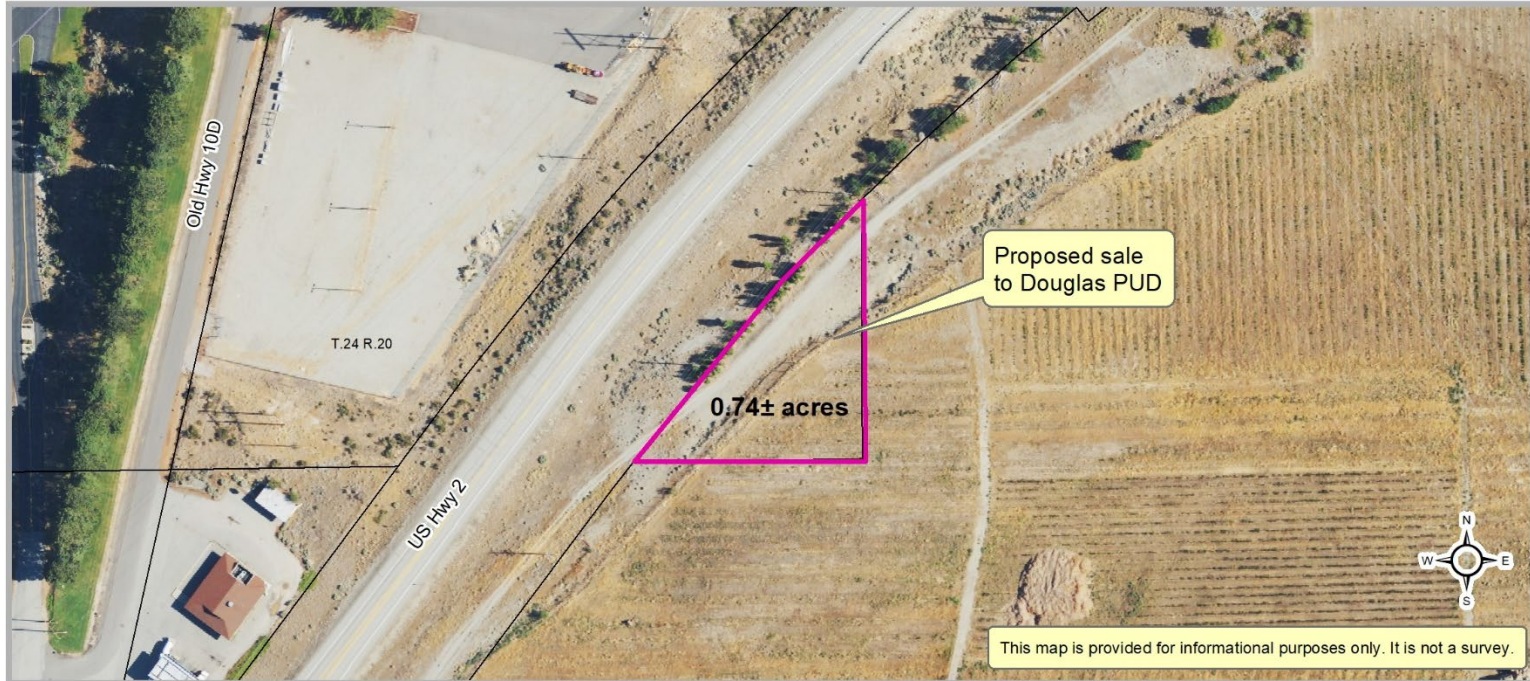


Proposed Sale to Douglas County PUD



- Small portion of a larger acquisition in 1956 for Rocky Reach Hydro
- Not in the project boundary
- Segregated from other District property by Highway 2
- Not developed or used by the District
- Does not have direct highway access
- District does not have a foreseeable use
- Surrounded by a parcel owned by Douglas PUD

Proposed Sale to Douglas County PUD



- 0.74± undeveloped acres
- Sale price - \$64,188

Discussion / Questions?

Next Steps:

Staff have prepared a resolution for the board's consideration