

# Quarterly Electric Load Update

December 2, 2024

Lyle Moore

Customer Service Engineering Supervisor

Chad Rissman

Director-Distribution Asset Management

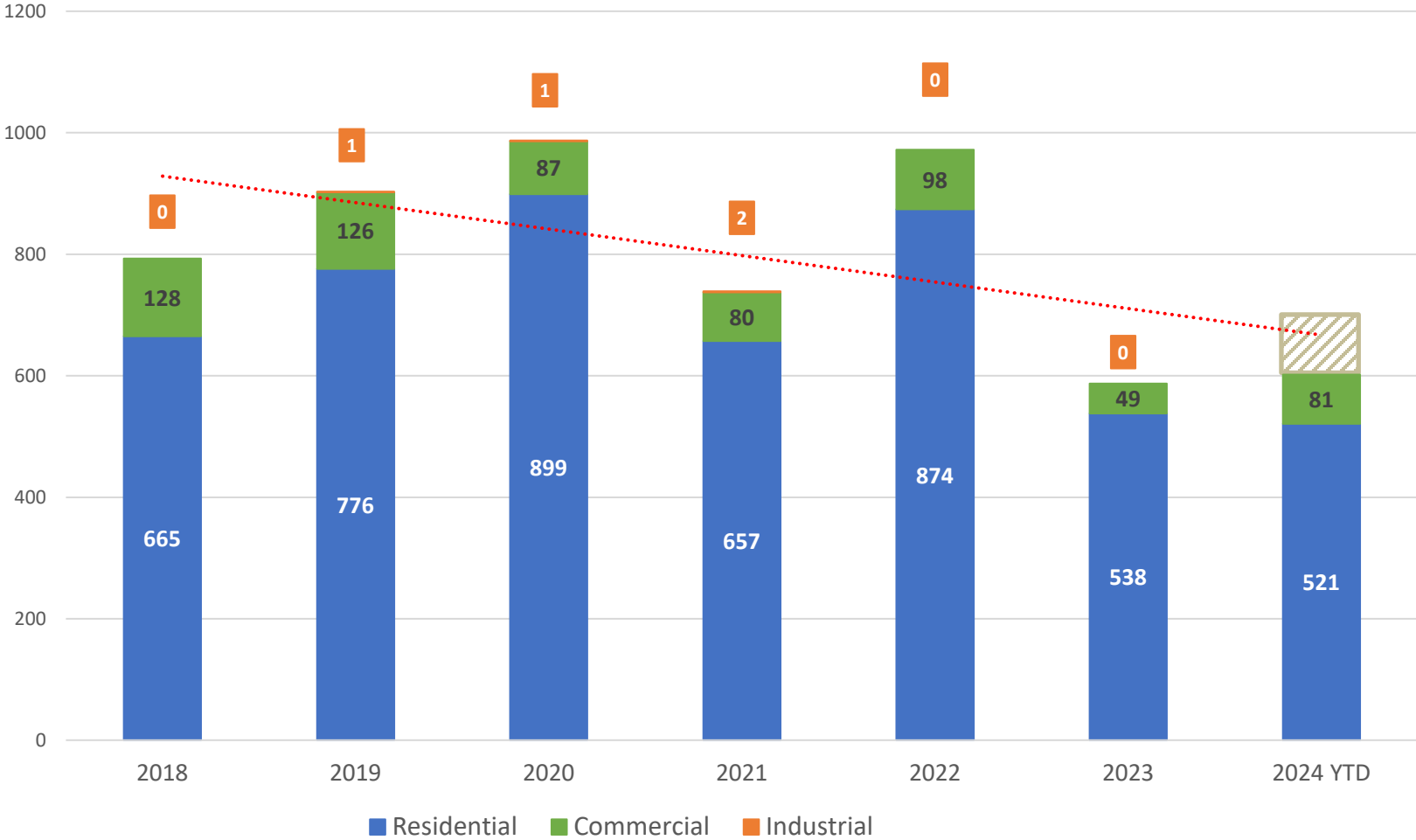


# Why we are here

- Review distribution growth
  - 2024 electric meters YTD
    - Organic distribution growth <5MW (>5MW loads handled through separate interconnection process)
- Applications & inquiries
- Substation build update

*No action today – update only*

# New Meter Installs 2018 - 2024 YTD



# Notable applications and inquiries




- Majestic Apartments, Wenatchee
- Grandview Riverfront Village, Wenatchee
- Leavenworth Meadows, Leavenworth
- Data Loads less than 5MW
- Developments and Multi-Dwelling Units

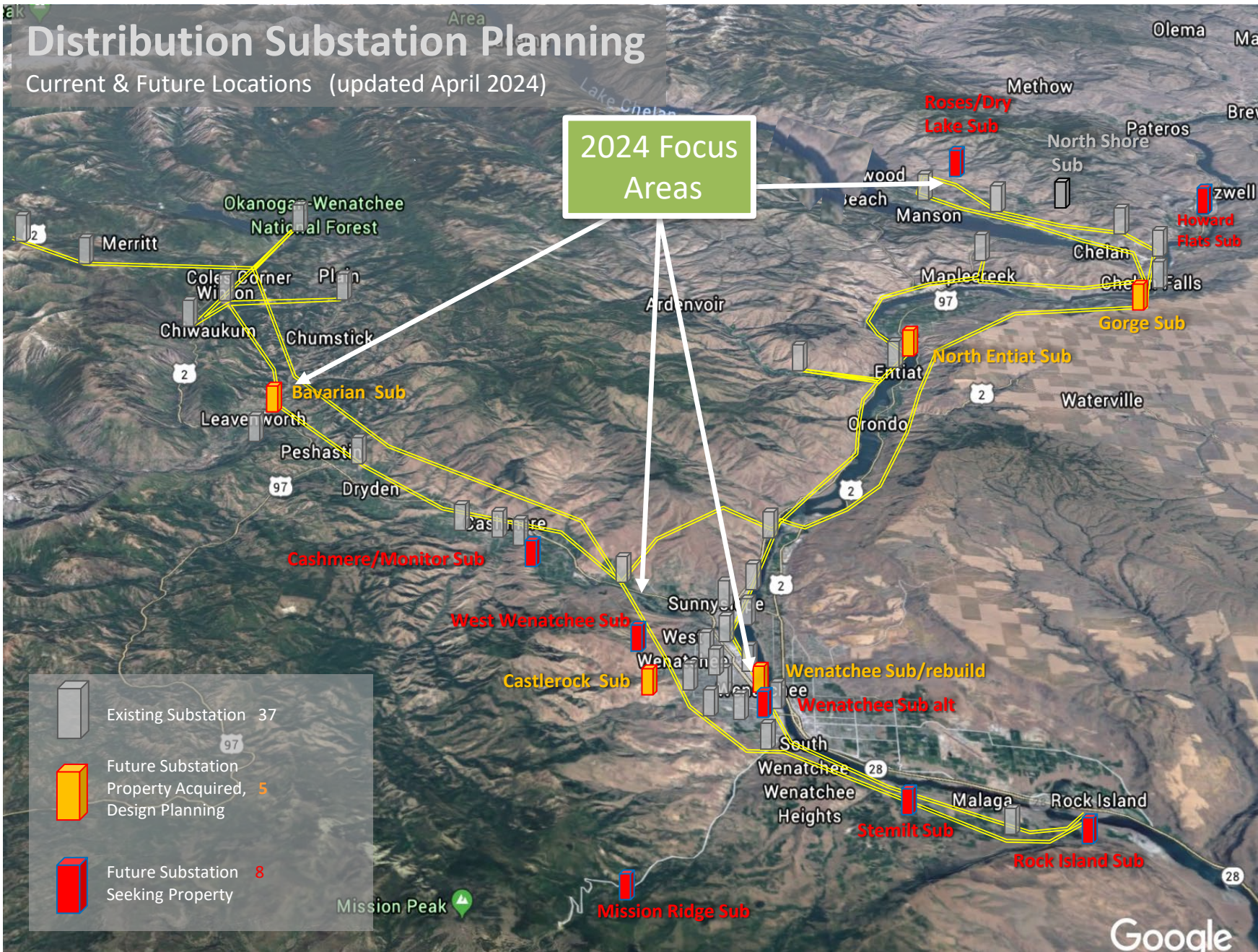


# Distribution Substation Planning

Current & Future Locations (updated April 2024)

2024 Focus Areas

-  Existing Substation 37
-  Future Substation Property Acquired, Design Planning 5
-  Future Substation Seeking Property 8



# Current Substation Program Status

Station/(vicinity)	Substation Program Phase	Substation Program Upcoming and Current Activities	
		<u>Internal work</u>	<u>Public engagement</u>
<b>North Shore</b> (Chelan)	BUILD	<ul style="list-style-type: none"> <li>Energized in July</li> </ul>	<ul style="list-style-type: none"> <li>Addressing some comments related to lights and fence slats</li> </ul>
<b>Bavarian</b> (Leavenworth)	BUILD	<ul style="list-style-type: none"> <li>Design at 90%</li> <li>Enviro &amp; permitting continue</li> </ul>	<ul style="list-style-type: none"> <li>Neighborhood input on design</li> <li>Coordinate with partner agencies</li> </ul>
<b>Wenatchee</b> (S. Wenatchee)	ACQUIRE	<ul style="list-style-type: none"> <li>Developing options</li> <li>Recommend purchase 12/16/24</li> </ul>	<ul style="list-style-type: none"> <li>Inform area stakeholders</li> <li>Direct contact with Key Accounts</li> </ul>
<b>Springwater</b> (West Wenatchee)	ACQUIRE	<ul style="list-style-type: none"> <li>Site selection</li> </ul>	<ul style="list-style-type: none"> <li>Neighborhood focus group 12/10/24</li> <li>Obtain feedback on preliminary transmission line and substation design</li> </ul>
<b>Roses</b> (Manson Vicinity)	PLAN	<ul style="list-style-type: none"> <li>High level site/property evaluations</li> </ul>	<ul style="list-style-type: none"> <li>Strategic outreach planning</li> <li>Begin informing key stakeholders</li> </ul>
Various Station Rehab Planning	PLAN	<ul style="list-style-type: none"> <li>Summit, Walla Walla, Plain</li> </ul>	<ul style="list-style-type: none"> <li>Direct contact with Key Accounts to communicate abnormal conditions and construction impacts</li> </ul>

*Please note:*  
 - Schedules are subject to change (station build team is updating)  
 - See 2024 District Performance Plan for more details

# Summary

- No significant changes from last quarter
- Residential and commercial connections continue to lag 5-year trend
- December 10th neighborhood meeting for West Wenatchee (Springwater) substation site
- Planned utility infrastructure investments are positioned to meet demands of high growth areas



# Questions?

