

IIG FIBER
MARINE CABLE INSTALLATION
Aprr. 7 miles

KB Park

Rock Island

Three Lakes

RI Dam

Intermountain Infrastructure Group 20 Year License Agreement

Vicki Griffin - Real Estate Services – November 4, 2024

Drawing provided for informational purposes only and is not a survey



WHY ARE WE HERE?

LICENSE AGREEMENT

Who: Intermountain Infrastructure Group (IIG)
~ Telecommunication utility provider

What: For the construction, operation and maintenance of two fiber optic cable routes across Chelan PUD land and within Project waters

When: Construction to begin in December pending approval of License

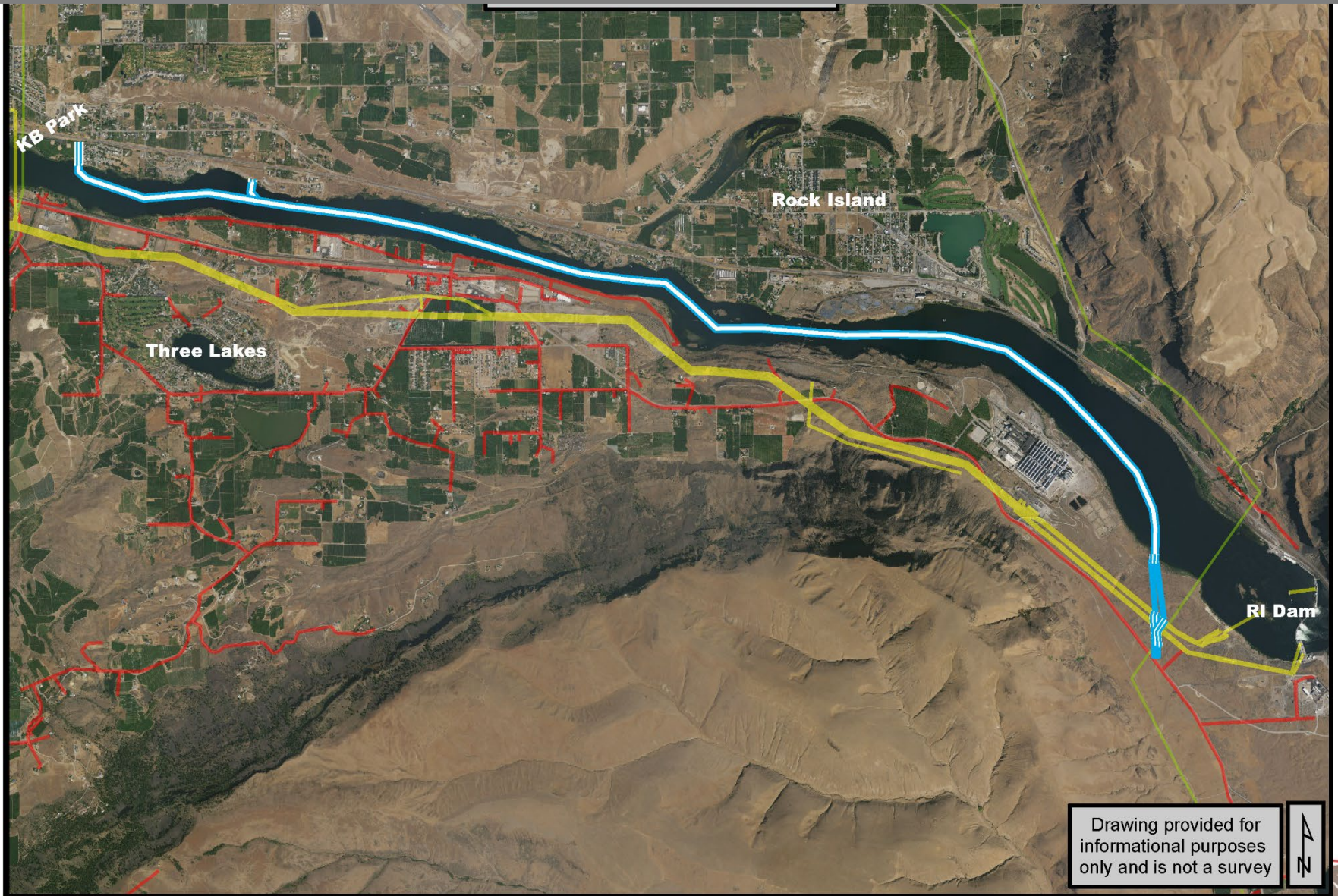
Why: Connect Microsoft's sites in Chelan, Douglas and Grant Counties

Where: West side of Chelan PUD's Rock Island Dam Parcel
East side of Kirby Billingsley Park
(2) 7± miles of marine cable in Columbia River
~ Between Rock Island Dam and Kirby Billingsley Park

Rock Island Dam - Fiber Cable Routes



Marine Fiber Cable Routes



Kirby Billingsley Park- Fiber Cable Routes



LICENSE AGREEMENT

Additional Points of Interest

- Initial term – 20 years with options for two additional 20-year terms
- Annual fee \$13,800/year plus annual 3% increase
- If relocation required, generally at IIG's sole cost
- IIG has applied for and received all required permits
- Rock Island License Land Use Article allows the District to permit this use

Questions?