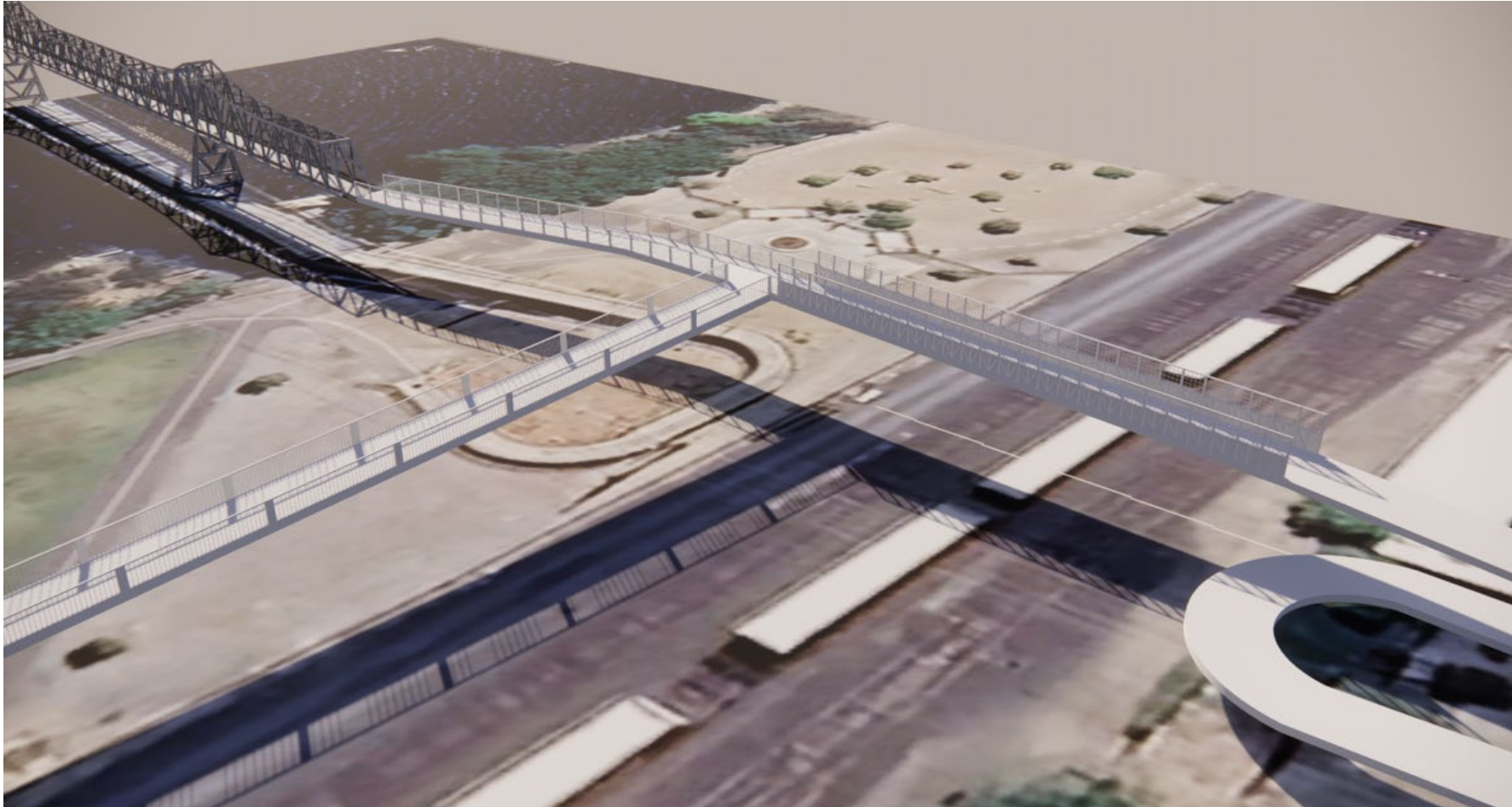


South Wenatchee Pedestrian Bridge Update

Casey Hall Project Manager

10-21-2024



Why We Are Here

- Project overview
- South Pedestrian Bridge, District scope and budget
- Motion to approve a new capital project and associated budget for utility relocation costs in franchise

South Pedestrian Bridge



- Transmission, Fiber and Distribution Relocations
- Utility Relocations, required by December, 2025
- Long Lead Transmission Material

South Pedestrian Bridge Budget

Total Utility Relocation Estimate	\$5,025,700
• Transmission	\$ 4,365,700
• Distribution	\$ 600,000
• Fiber	\$ 60,000

Includes a Project Contingency of 30% or \$1,507,710

Proposed Motion

To establish a new capital project and associated budget for the South Pedestrian Bridge Relocate Utilities in the amount of \$4,365,700.