

Resolution to Acquire Property for substation to serve Wenatchee commercial district and transmission line relocation

December 16, 2024

Chad Rissman, Lisa Graves

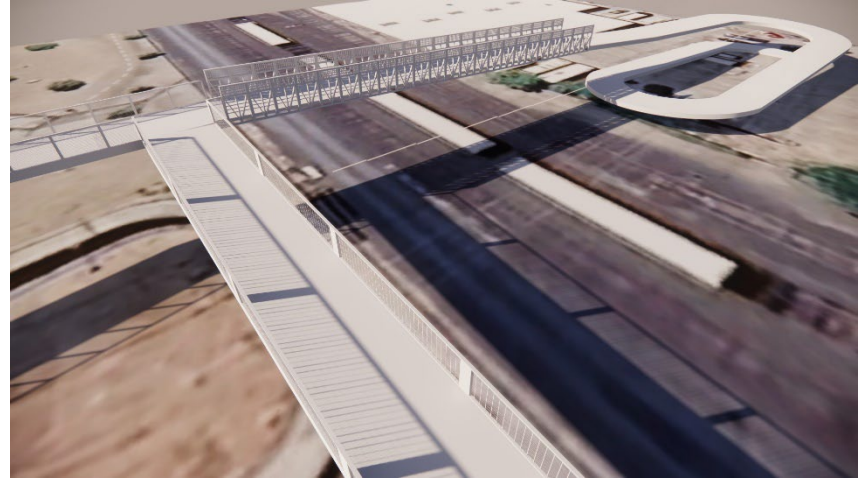
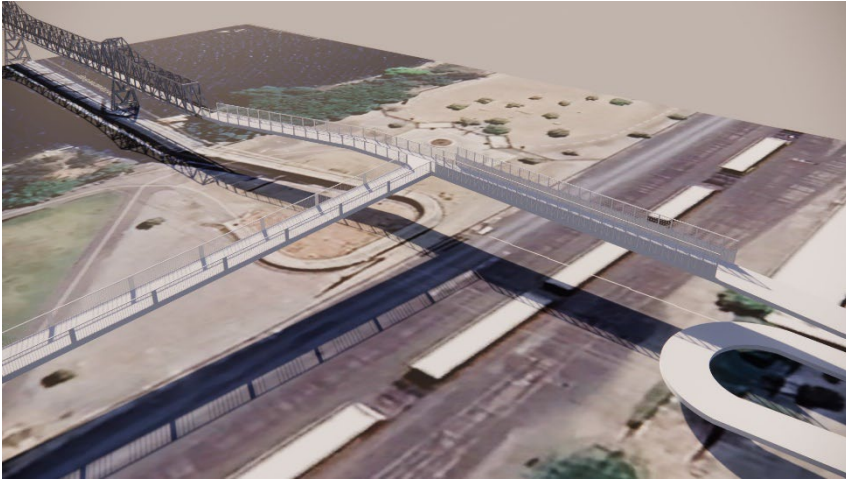


Recap

- Need and background
- Stocker property (825 S. Columbia St.)
- Risk mitigation during feasibility period
- Purchase recommendation



City of Wenatchee Pedestrian Bridge Project



Stocker Property

Corner of S. Columbia St. and Bridge St.

1.14± acres

Transmission Line

Benton St

11

T 22 R. 20

Benton Way

S Columbia St

Bridge St

This map is provided for informational purposes only. It is not a survey.



Questions/Resolution